

Brooks Service Suite™ for QUANTIM® Coriolis and SLA Series Thermal Mass Flow and Pressure Products

Description:

The Brooks Service Suite™ is a Microsoft® Windows® based application that provides expanded control, diagnostics and servicing capabilities for the Brooks QUANTIM® Coriolis and SLA Series thermal mass flow and pressure products. The Brooks Service Suite can be used for servicing tasks that include setup, configuration, troubleshooting and tuning. The Brooks Service Suite Pro also provides access to the calibration parameters for the SLA Series thermal mass flow products.

Customers interested in the Brooks Service Suite Pro version supporting calibration, should contact their local Brooks Help Desk/Service representative to learn more about Service Suite training.

To install the Service Suite application, download the BSS setup from the www.brooksinstrument.com/bss website and follow the instructions which are also available on this website. You may install the application on as many PCs as desired. However, the Service Suite will only operate on a PC which has the required dongle connected. The dongle comes in the two versions, Standard and Pro.

Features and Benefits:

- Simple RS-232 connection between a personal computer (PC) and the mass flow device service port for easy plug-and-play installation.
- Automatic detection of the connected device in the Startup Wizard.
- User-friendly interface running under Microsoft Windows simplifies operation and data capture
- Easy-to-use, menu driven operation with user configurable displays for maximum flexibility
- Automatic recognition and configuration of diagnostic screens appropriate for the connected mass flow device.
- Communicates with all versions of the Brooks QUANTIM Coriolis and SLA Series thermal mass flow and pressure products.
- Able to switch control of the mass flow device between the Brooks Service Suite and the external process controller for real time on-line diagnostics and tuning.
- Device parameter save and restore capability ensures device calibration settings are never lost.
- Able to capture device log data to comma-delimited (*.CSV) compatible format for easy import into Microsoft Excel®.
- Training by Brooks Technical Service Group is available to quickly bring you up to speed on this or any of the Brooks products.
- Brooks Service Suite Pro also provides access to the SLA Series thermal mass flow calibration parameters.

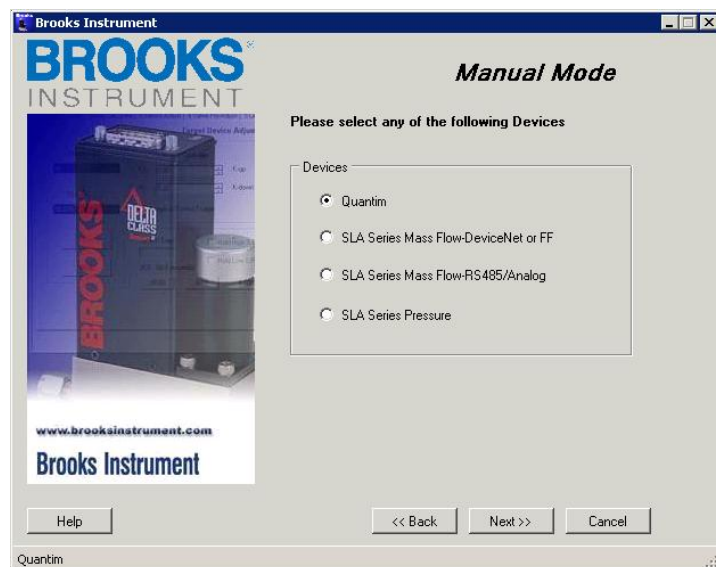
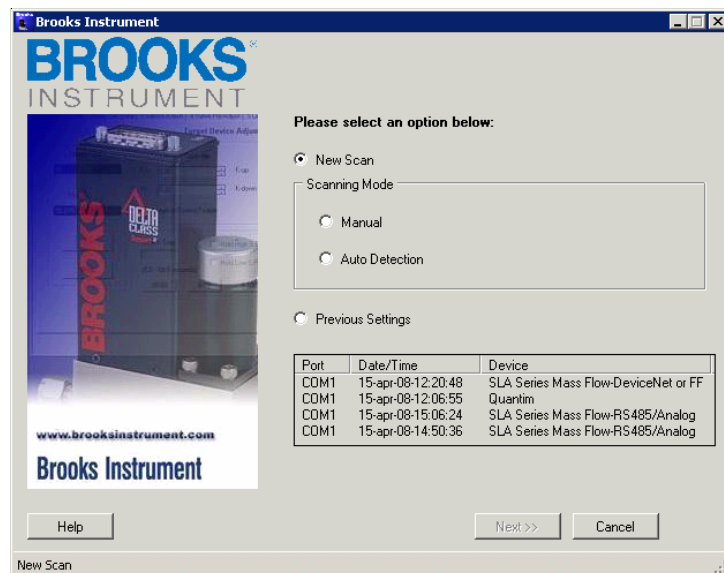


Figure 1 – Brooks Service Suite™ Running On PC / QUANTIM Coriolis and SLA Series Mass Flow Products

Brooks® Service Software

Startup Wizard:

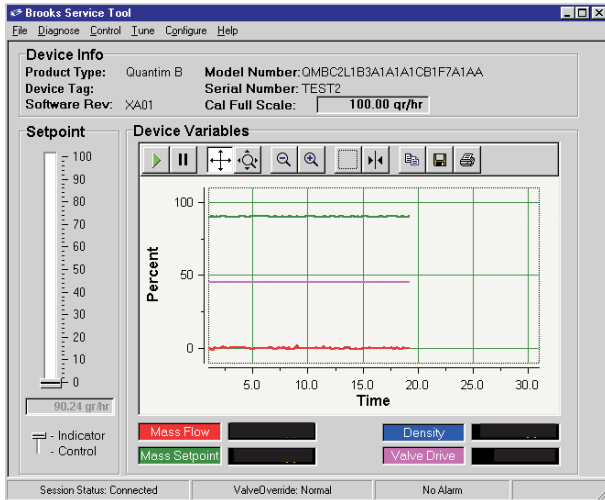
The Startup Wizard features an auto detect and manual mode. In Auto Detection mode the Startup Wizard will scan the available serial ports, automatically connecting to the device and launch the appropriate service software to support the connected device.



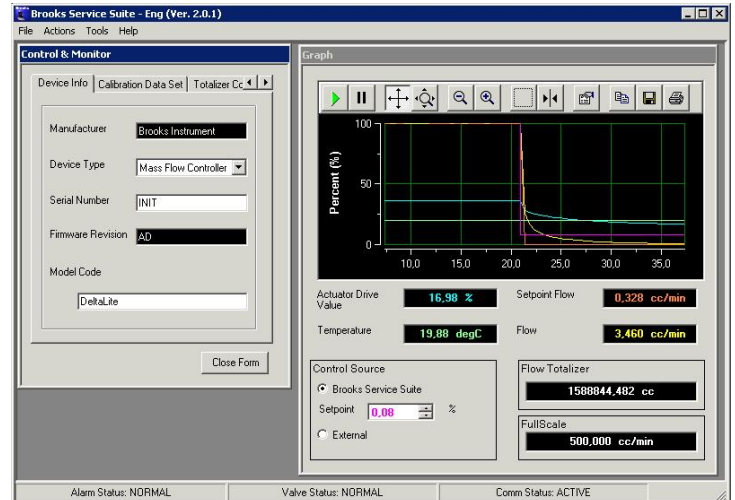
Standard Communication Functions:

The Brooks Service Suite can be used to view, control, and modify data such as:

- Flow
- Setpoint
- Alarm Settings
- Analog input/output (I/O) configuration & tuning
- RS-485 settings
- I/O ranging
- Valve tuning / flow response optimization
- Diagnostics
- SLA Series Thermal Mass Product Flow Calibration Parameters (Brooks Service Suite Pro)



Main Window of Brooks BST Application for QUANTIM, SLA Series Mass Flow and Pressure, DeviceNet and FF



Main Window of Brooks BSS Application for the SLA Series Mass Flow and RS-485 /Analog

System Requirements:

The Brooks Service Suite application can be installed on a Windows PC under the following requirements:

- Standard: Serial Port Or USB Port With USB To Serial Port Adapter
- Microsoft Windows 2000 (with SP4), XP (with SP2) or Vista
- Pro: Two Serial Ports or two USB Ports with USB to Serial Port Adapters.
- One spare USB Port for Security Dongle.

Installation Hardware Requirements:

- Communication Cable Kit Part Number S-778-D-023-ZZZ consisting of:
 - Standard RS-232 serial cable (required if distance between PC and the device serial port exceeds length of 3-wire communications cable)
 - RS-232 to TTL communications interface adapter
 - 3-wire communications cable (between the interface connector and the device service port connector)
- Straight (flat blade) or phillips screwdriver
- 3/16-in. nut driver
- One Serial port or USB-to-Serial port adaptor. For the Pro version two serial or USB-to-serial port adaptors are needed in case Auto-Vol-U-Meter mode is used during calibration on the SLA Series Mass Flow-RS485/ Analog product range

Installation and Operation Manuals:

Installation and operation manuals are stored per product range and can be retrieved from the Brooks Instrument website (www.BrooksInstrument.com), navigate to the Documentation page and click the 'Software Tools' item.

Product Range	Instruction and Operations manual
Quantim	Brooks Service Tool for QMB
SLA Series Mass Flow-DeviceNet or FF	Brooks Service Tool for SLA-MFC
SLA Series Mass Flow-RS485/Analog	Brooks Service Suite for SLA-RS485/Analog
SLA Series Pressure Controller	Brooks Service Tool for SLA-PC
SLA Series Pressure Controlling Flowmeter	Brooks Service Tool for SLA-RT

Brooks® Service Software

BROOKS LOCAL AND WORLDWIDE SUPPORT

Brooks Instrument provides sales and service facilities around the world, ensuring quick delivery from local stock, timely repairs and local based sales and service facilities.

Our dedicated flow experts provide consultation and support, assuring successful applications of the Brooks flow measurement and control products.

Calibration facilities are available in local sales and service offices. The primary standard calibration equipment to calibrate our flow products is certified by our local Weights and Measures Authorities and traceable to the relevant international standards.

START-UP SERVICE AND CALIBRATION

Brooks Instrument can provide start-up service prior to operation when required.

For some process applications, where ISO-9001 Quality Certification is important, it is mandatory to verify and/or (re)calibrate the products periodically. In many cases this service can be provided while replicating actual process conditions, and the results will be traceable to the relevant international quality standards.

CUSTOMER SEMINARS AND TRAINING

Brooks Instrument can provide customer seminars and dedicated training to engineers, end users and maintenance persons. Please contact your nearest sales representative for more details.

HELP DESK

In case you need technical assistance:

Americas ☎ 1-888-554-FLOW
Europe ☎ +(31) 318 549 290 Within Netherlands ☎ 0318 549 290
Asia ☎ +011-81-3-5633-7100

Due to Brooks Instrument's commitment to continuous improvement of our products, all specifications are subject to change without notice.

TRADEMARKS

Brooks Brooks Instrument, LLC
Brooks Service Suite Brooks Instrument, LLC
Excel Microsoft Corporation
Microsoft Microsoft Corporation
QUANTIM Brooks Instrument, LLC
Windows Microsoft Corporation



Brooks Instrument
407 West Vine Street
P.O. Box 903
Hatfield, PA 19440-0903 USA
T (215) 362-3700
F (215) 362-3745
E-Mail BrooksAm@EmersonProcess.com
www.BrooksInstrument.com

Brooks Instrument
Neonstraat 3
6718 WX Ede, Netherlands
T 31-318-549-300
F 31-318-549-309
E-Mail BrooksEu@EmersonProcess.com

Brooks Instrument
1-4-4 Kitasuna Koto-Ku
Tokyo, 136-0073 Japan
T 011-81-3-5633-7100
F 011-81-3-5633-7101
E-Mail BrooksAs@EmersonProcess.com