

Quick Start Guide

Brooks® Model 0260 Secondary Electronics



Brooks® Model 0260 Secondary Electronics

Dear Customer,

The Brooks Smart Interface is a Microsoft Windows based software application that provides expanded control and monitoring capabilities in a process environment for the Brooks Thermal Mass Flow Meters and Controllers with an RS485 Smart protocol digital interface. This software is able to control and monitor up to 30 devices while each hardware module can power up to 10 devices.

Before using the tool, we recommend that you read the Help available after installation of the Brooks Smart Interface software application.

Note that all documents and software are available for download on the Documentation section of the Brooks Web Page, www.BrooksInstrument.com.

Should you require any additional information concerning Brooks products and services, please contact your local Brooks Sales and Service Office listed on the back cover of this Guide or visit www.BrooksInstrument.com

Yours Sincerely,

Brooks Instrument

Brooks® Model 0260 Secondary Electronics

<u>Paragraph Number</u>		<u>Page Number</u>
Installation Section 1		
1.1	System Requirements	1-1
1.2	Hardware Requirements	1-1
1.3	Uninstall Previous Brooks Smart Interface	1-1
1.4	Install the Brooks Smart Interface	1-1
1.5	Install the Brooks 0260 Hardware	1-5
1.6	Control Smart Interface from Another Application	1-6
1.7	End Users License Agreement	1-7
<u>Figure Number</u>		<u>Page Number</u>
1.1	Outline Drawing for Brooks 0260 Secondary Electronics Device	1-5
1.2	PC with Brooks 0260 Secondary Electronics and Devices	1-6

*THIS PAGE WAS
INTENTIONALLY
LEFT BLANK*

1.1 System Requirements

The Brooks Smart Interface software application can be installed on a Windows PC under the following requirements:

- Microsoft Windows XP (SP2), Vista or 7
- Two spare USB Ports, one for the security dongle which enables the user to run the Brooks Smart Interface application, one for connecting the 0260 hardware module. Up to 10 Brooks Mass Flow Meters and Controllers can be connected to one single 0260 hardware module. A third USB Port is needed if you want to connect up to 20 Brooks Mass Flow Meters and Controllers. The Smart Interface software application supports up to 30 Brooks Mass Flow Meters and Controllers

1.2 Hardware Requirements

- 0260 hardware module, capable of connecting up to 10 Brooks RS485 based Mass Flow Meter or Controllers.
- Power cord
- USB cable type A to B
- 0260 Single Drop RS485 Communication/Power cable
- USB security dongle (in case the Brooks Smart Interface software application is purchased)

The 0260 Single Drop RS485 cable can be extended to a Multi Drop RS485 cable by purchasing the following Brooks Part Number: 124Y042AAA

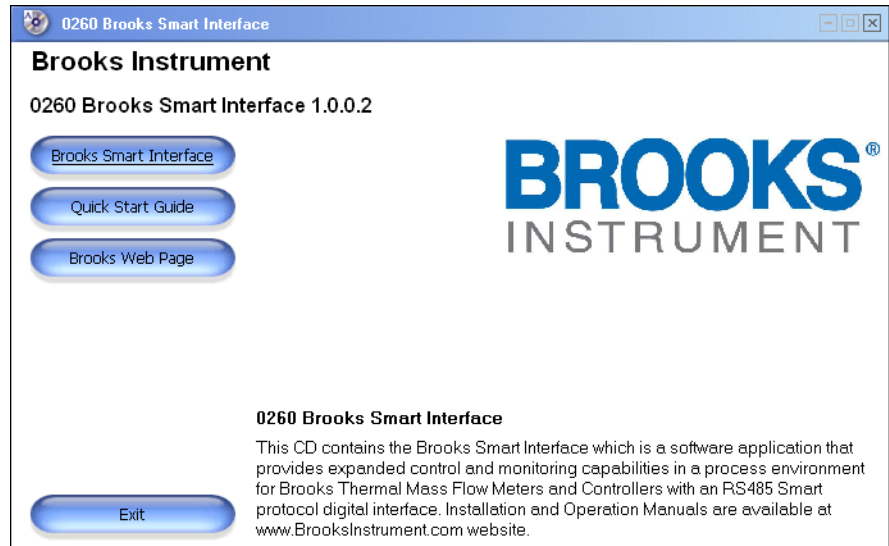
1.3 Uninstall Previous Brooks Smart Interface

Prior to installing the Brooks Smart Interface software application you first need to uninstall any previous versions of the Smart Interface and HASP SRM driver software.

1.4 Install the Brooks Smart Interface

1. Make sure that the 0260 hardware module is not connected.
2. To install the Brooks Smart Interface software application, place the Smart Interface CD-ROM into the drive. If the installation shell does not come up automatically, find the installation file 'Autorun.exe' on the CD-ROM and double-click to launch the program. The following window will appear. If you didn't purchase the CD-ROM you can download the CD-ROM contents from the Brooks website in the 'Documentation & Downloads->Software Downloads' section, www.BrooksInstrument.com

Brooks® Model 0260 Secondary Electronics

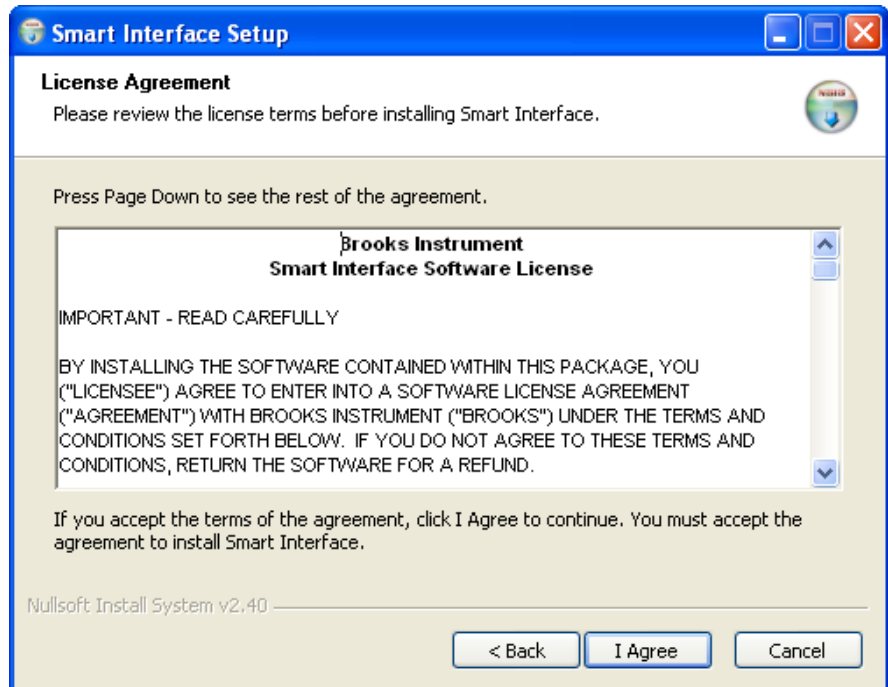


3. Make sure that any old versions of the Smart Interface applications and HASP SRM drivers have been uninstalled, see previous section of this document.
4. Next, click on the 'Brooks Smart Interface' button to install the application.
5. Click the 'Next' button on the 'Welcome' screen:

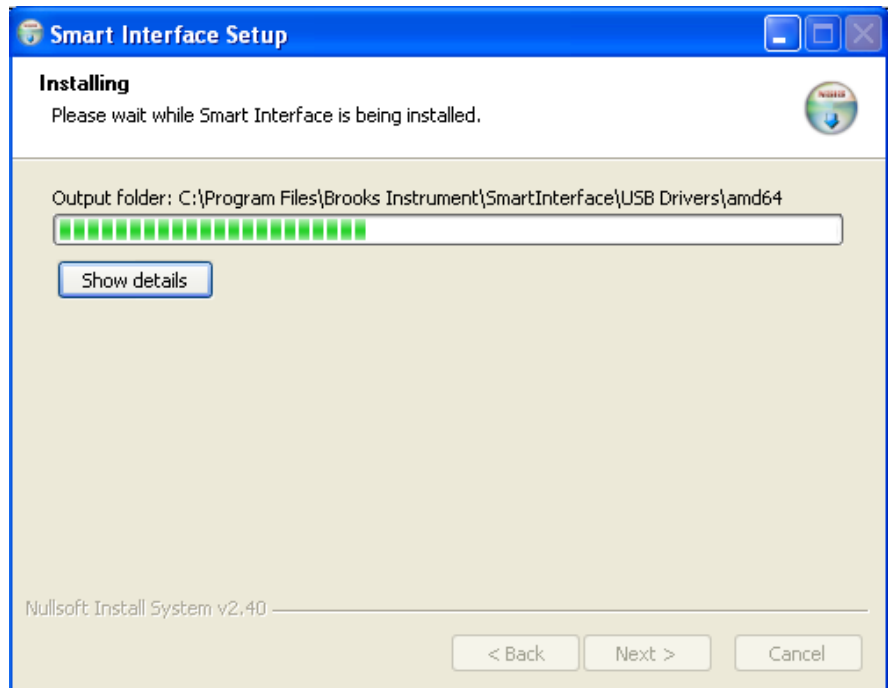


6. Click the 'I Agree' button to accept the license agreement.

Brooks® Model 0260 Secondary Electronics

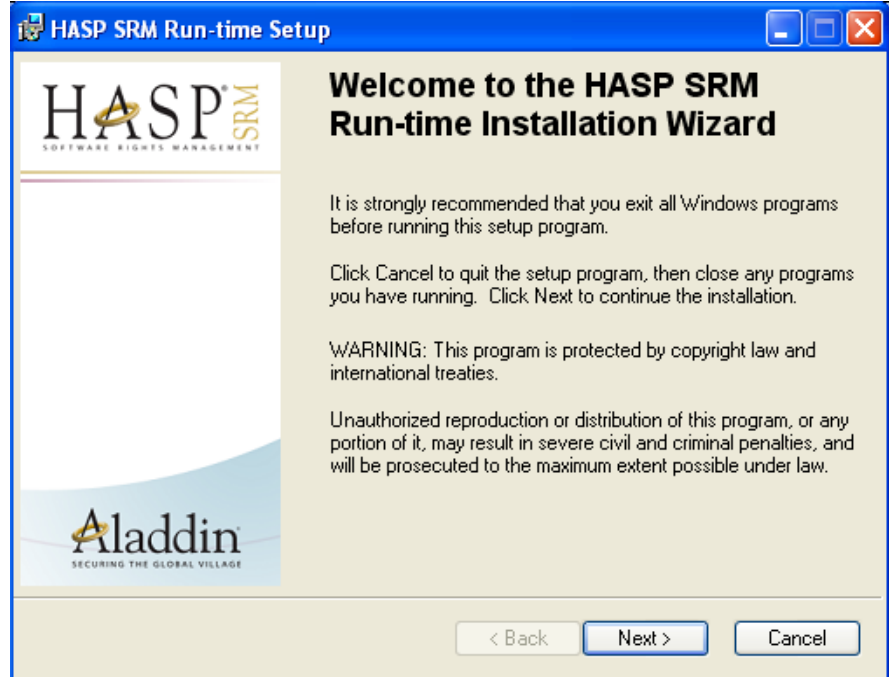


7. The Brooks Smart Interface installation is in progress.



8. Click the 'Next' button to install the HASP SRM driver, which is needed to support the security dongle.

Brooks® Model 0260 Secondary Electronics



9. The USB to serial driver is installed silently, if you want to rerun the USB to serial driver install you can execute 'USBDriverSetup.exe' in folder '<Program Files>\Brooks Instrument\SmartInterface\USB Drivers'
10. In case you need to manually install the USB to serial driver you can find the driver installation files in:
<Program Files>\Brooks Instrument\SmartInterface\USB Drivers
11. Once you've dismissed the 'Finished' screen, the installation of the Smart Interface is complete. The Smart Interface application can be started by using the shortcut in the 'Start->All Programs' menu or the icon on the desktop shown below. Note that you need to insert the USB security dongle into a USB port in order to run the Smart Interface application.



12. Start the Smart Interface application and visit the 'Help->Quick Start Guide' to quickly get familiar with the software application setup.

1.5 Install the Brooks 0260 Hardware

1. If you didn't purchase the Brooks Smart Interface software application you still have to run the installation of this software application in order to get the installation files for the USB to serial driver, see list items 9 and 10 of the previous section for the location of the driver files and driver installation application. The Brooks Smart Interface software installation can be downloaded from the Brooks website www.BrooksInstrument.com in section 'Documentation & Downloads->Software Downloads', note that you will not be able to run this application without the security dongle.
2. Connect the RS485 communication and power cable to the 0260 hardware module. On the other end of the cable connect any Brooks Mass Flow Meters or Controllers.
3. Connect the power cord to the 0260 hardware module and insert the other end to an AC power source.
4. Connect the USB cable to the 0260 and the PC.

(See Figures 1.1 and 1.2 showing dimensions and connections.)

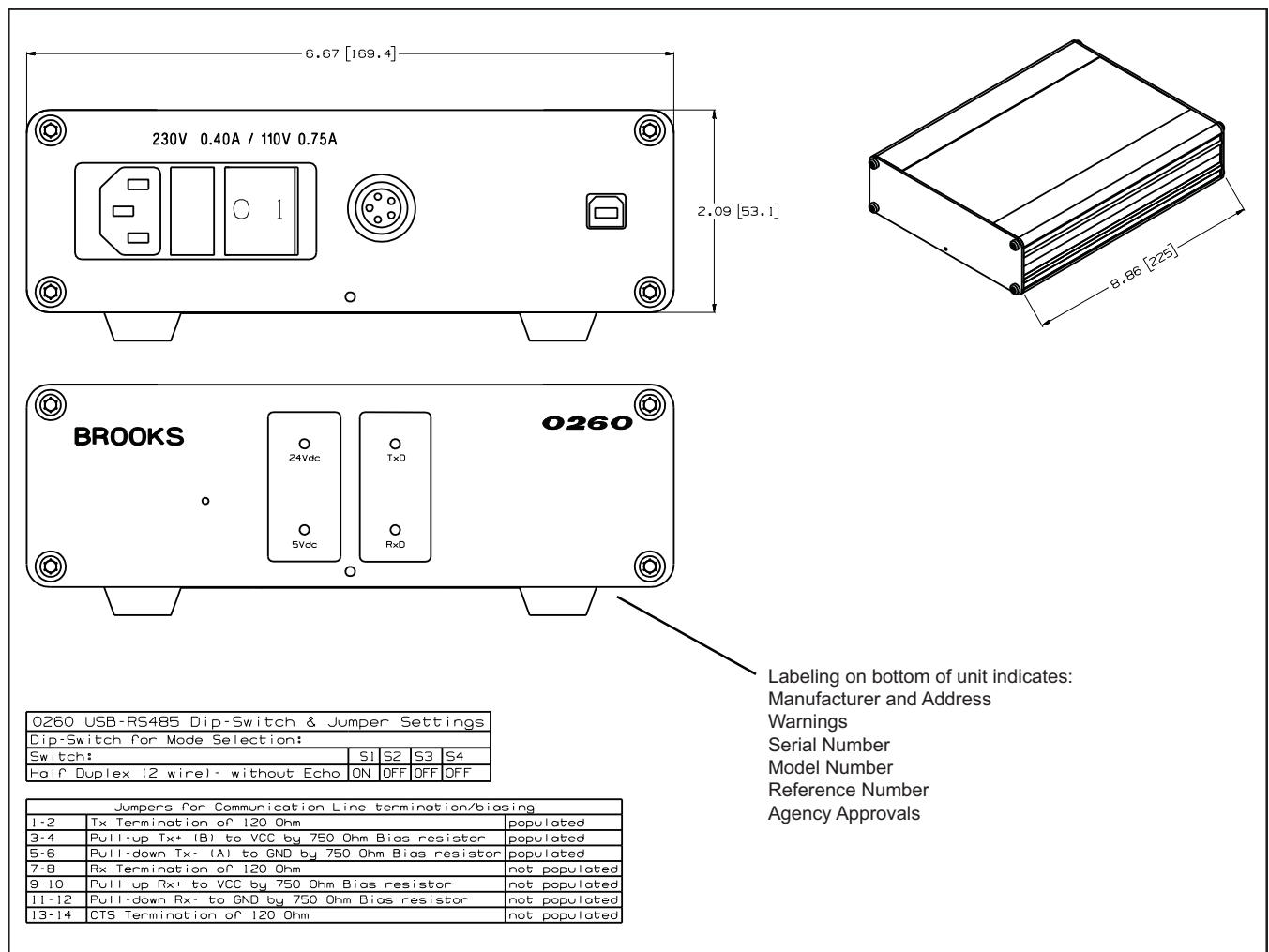


Figure 1.1 Outline Drawing for Brooks® 0260 Secondary Electronics Device

Brooks® Model 0260 Secondary Electronics



Figure 1.2 PC with Brooks® 0260 Secondary Electronics and Devices

1.6 Control Smart Interface from Another Application

The basic functions of the Brooks Smart Interface application can be controlled by another application. For more information on this you're referred to the 'How to Control Brooks Smart Interface from a separate program' help page. The LabVIEW application described in this help page is available in '<Program Files>\Brooks Instrument\SmartInterface\Examples\Clipboard WriteRead.vi'

1.7 End User License Agreement**Brooks Instrument
Smart Interface Software License****IMPORTANT - READ CAREFULLY**

BY INSTALLING THE SOFTWARE CONTAINED WITHIN THIS PACKAGE, YOU ("LICENSEE") AGREE TO ENTER INTO A SOFTWARE LICENSE AGREEMENT ("AGREEMENT") WITH BROOKS INSTRUMENT ("BROOKS") UNDER THE TERMS AND CONDITIONS SET FORTH BELOW. IF YOU DO NOT AGREE TO THESE TERMS AND CONDITIONS, RETURN THE SOFTWARE FOR A REFUND.

GRANT OF LICENSE:

BROOKS grants to LICENSEE a non-exclusive and non-transferable license to use the Smart Interface software solely for LICENSEE's own use on any single computer, provided the Software is in use only on one computer at any time. If LICENSEE has multiple licenses for the Software, then at any time LICENSEE may have as many copies of the Software in use as licenses.

COPYRIGHT:

The Software and associated documentation ("Product") is owned by BROOKS and is protected by United States copyright laws and international treaty provisions. Therefore, LICENSEE must treat the Software like any other copyrighted material (e.g., a book or musical recording) except that LICENSEE may make one copy of the Software solely for backup or archival purposes. All copies of the Software are subject to the terms of this AGREEMENT. LICENSEE may copy the documentation so long as the total number of copies, including any copies supplied by BROOKS, does not exceed the number of licenses. All titles, trademarks, copyrights and restricted notices shall be reproduced in all Product copies.

RETENTION OF RIGHTS:

The Software is licensed, not sold. BROOKS shall retain all right, title and interest including, but not limited to, copyright and other proprietary rights in the Product. LICENSEE shall not acquire any rights, express or implied, in the Software, or any related trademark, trade name, logo or product designation, other than those specified in this AGREEMENT. Use of the term "purchase" or "sale" shall not connote transfer of title or ownership.

OTHER RESTRICTIONS:

LICENSEE shall not, without BROOKS' prior written consent, (a) rent, lease, lend, sub-license, or otherwise transfer the materials or LICENSEE's rights hereunder; (b) remove or obscure proprietary or copyright notices which may be set forth on the Product; or (c) reverse engineer, alter, decrypt, decompile, extract, disassemble, modify or translate the Software. Use of Software in conjunction with any mechanical modification, alteration or repair of BROOKS' products is not recommended. Such modification, alteration or repair of BROOKS' products by LICENSEE can result in death or bodily injury. LICENSEE is advised to return products to BROOKS or an authorized service provider for such modification, alteration or repair.

UPGRADES:

License upgrades may become available for the Software. Upgrades may be offered to LICENSEE at a nominal cost.

WARRANTY:

BROOKS warrants the original Software media, as well as the documentation and hardware ("Related Materials"), to be free from defective materials or workmanship in normal use for twelve (12) months from first use, not to exceed eighteen (18) months from shipment by BROOKS. BROOKS further warrants that the Software will substantially perform in accordance with the accompanying documentation. BROOKS will repair or replace, free of charge, that Software media or Related Materials that BROOKS finds to be defective in materials or workmanship if returned to BROOKS, transportation charges prepaid, within the foregoing period. Where Software upgrades are provided, BROOKS' warranty hereunder shall be limited to ninety (90) days from shipment by BROOKS. BROOKS GRANTS ONLY THE ABOVE STATED EXPRESS WARRANTY. NO OTHER WARRANTIES ARE GRANTED INCLUDING, BUT NOT LIMITED TO, EXPRESS AND IMPLIED WARRANTIES OF MERCHANTABILITY AND FITNESS FOR A PARTICULAR PURPOSE.

LIABILITY:

REGARDLESS OF THE CAUSE OF ACTION UNDER WHICH A CLAIM MAY ARISE, INCLUDING CONTRACT OR TORT (INCLUDING NEGLIGENCE) OR OTHER CAUSES OF ACTION, IN NO EVENT SHALL BROOKS BE LIABLE FOR: (A) ANY SPECIAL, INCIDENTAL, INDIRECT, OR CONSEQUENTIAL DAMAGES; (B) ANY DAMAGES WHATSOEVER RESULTING FROM BUSINESS INTERRUPTION OR LOSS OF USE, DATA, PROFITS, PRODUCT, OR WORK DAYS; OR (C) ANY PROPERTY DAMAGES ARISING OUT OF, OR IN CONJUNCTION WITH, THIS AGREEMENT OR THE USE OR PERFORMANCE OF THE SOFTWARE. BROOKS' TOTAL LIABILITY FOR DAMAGES HEREUNDER SHALL IN NO EVENT EXCEED AN AMOUNT EQUAL TO THE FEE PAID BY LICENSEE UNDER THIS AGREEMENT.

EXPORT:

LICENSEE agrees to comply fully with all relevant export laws and regulations of the United States ("Export Laws") to assure that neither the Software, nor any direct product thereof, is exported, directly or indirectly, in violation of Export Laws; or is intended to be used for any purposes prohibited by the Export Laws, including without limitation, nuclear, chemical or biological weapons proliferation.

Brooks® Model 0260 Secondary Electronics

GOVERNING LAW:

The laws of the State of Missouri shall govern as to the interpretation, validity and effect of this AGREEMENT, and the parties agree that Missouri has jurisdiction over the parties and subject matter and is the desired venue for formal resolution of all disputes not amicably settled by discussion between the parties.

ENTIRE AGREEMENT:

This AGREEMENT constitutes the entire agreement between the parties with respect to its subject matter and supersedes all previous discussions, representations, agreements, and understandings.

Quick Start Guide

X-SW-0260-eng

Part Number: 541B157AAG

October, 2010

Brooks® 0260 Secondary Electronics

*THIS PAGE WAS
INTENTIONALLY
LEFT BLANK*

Brooks® 0260 Secondary Electronics

BROOKS SERVICE AND SUPPORT

Brooks is committed to assuring all of our customers receive the ideal flow solution for their application, along with outstanding service and support to back it up. We operate first class repair facilities located around the world to provide rapid response and support. Each location utilizes primary standard calibration equipment to ensure accuracy and reliability for repairs and recalibration and is certified by our local Weights and Measures Authorities and traceable to the relevant International Standards.

Visit www.BrooksInstrument.com to locate the service location nearest to you.

START-UP SERVICE AND IN-SITU CALIBRATION

Brooks Instrument can provide start-up service prior to operation when required. For some process applications, where ISO-9001 Quality Certification is important, it is mandatory to verify and/or (re)calibrate the products periodically. In many cases this service can be provided under in-situ conditions, and the results will be traceable to the relevant international quality standards.




CUSTOMER SEMINARS AND TRAINING

Brooks Instrument can provide customer seminars and dedicated training to engineers, end users and maintenance persons.

Please contact your nearest sales representative for more details.

HELP DESK

In case you need technical assistance:

- Americas  1 888 554 FLOW
- Europe  +31 (0) 318 549 290
- Asia  +81 (0) 3 5633 7100

Due to Brooks Instrument's commitment to continuous improvement of our products, all specifications are subject to change without notice.

TRADEMARKS

Brooks Brooks Instrument, LLC



X-SW-0260-QS-eng (0910)

Brooks Instrument
 407 West Vine Street
 P.O. Box 903
 Hatfield, PA 19440-0903 USA
 T (215) 362 3700
 F (215) 362 3745
 E-Mail BrooksAm@BrooksInstrument.com
www.BrooksInstrument.com

Brooks Instrument
 Neonstraat 3
 6718 WX Ede, Netherlands
 T +31 (0) 318 549 300
 F +31 (0) 318 549 309
 E-Mail BrooksEu@BrooksInstrument.com

Brooks Instrument
 1-4-4 Kitasuna Koto-Ku
 Tokyo, 136-0073 Japan
 T +81 (0) 3 5633 7100
 F +81 (0) 3 5633 7101
 E-Mail BrooksAs@BrooksInstrument.com

